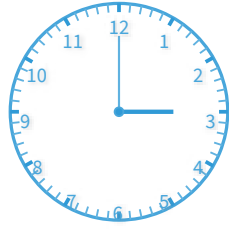


#1

What time does the clock show?



3:00

1:00

6:00

4:00

Show your work

#2

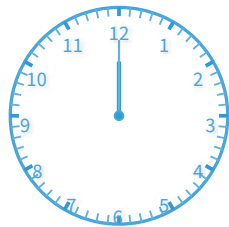
What time does the clock show? Answer using digits and a colon (for example: 10:46).



Show your work

#3

What time does the clock show?



12:00

8:00

10:00

11:00

Show your work

#4

What time does the clock show? Answer using digits and a colon (for example: 10:46).



Show your work

#5

What time does the clock show?



10:00

9:00

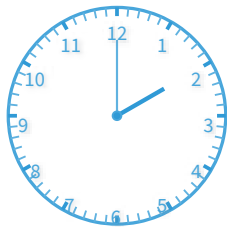
6:00

7:00

Show your work

#6

What time does the clock show?



3:00

5:00

4:00

2:00

Show your work

#7

What time does the clock show? Answer using digits and a colon (for example: 10:46).



Show your work

#8

What time does the clock show? Answer using digits and a colon (for example: 10:46).



Show your work

#9

What time does the clock show? Answer using digits and a colon (for example: 10:46).



Show your work

#10

What time does the clock show?



10:00

8:00

11:00

7:00

Show your work

#11

What time does the clock show?



11:00

8:00

9:00

12:00

Show your work

#12

What time does the clock show? Answer using digits and a colon (for example: 10:46).



Show your work

Question	Answer
#1	choice 1
#2	10:00
#3	choice 1
#4	1:00
#5	choice 4
#6	choice 4
#7	1:00
#8	11:00
#9	6:00
#10	choice 1
#11	choice 1
#12	8:00