

#1

What time does the clock show? Answer using digits and a colon (for example: 10:46).



Show your work

#2

What time does the clock show?



☐ 5:45

☐ 5:00

☐ 5:15

☐ 6:00

Show your work

#3

What time does the clock show? Answer using digits and a colon (for example: 10:46).



Show your work



#4

What time does the clock show?

☐ 4:30☐ 3:50☐ 3:55☐ 3:45

Show your work

#5

What time does the clock show? Answer using digits and a colon (for example: 10:46).



Show your work

#6

What time does the clock show? Answer using digits and a colon (for example: 10:46).

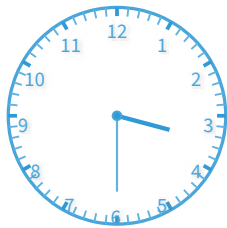


Show your work



#7

What time does the clock show?



☐ 2:25

☐ 2:50

☐ 3:50

☐ 3:30

Show your work

#8

What time does the clock show? Answer using digits and a colon (for example: 10:46).



Show your work

#9

What time does the clock show? Answer using digits and a colon (for example: 10:46).



Show your work

#10

What time does the clock show?



☐ 10:40

☐ 9:50

☐ 8:55

☐ 10:20

Show your work

#11

What time does the clock show? Answer using digits and a colon (for example: 10:46).



Show your work

#12

What time does the clock show?



☐ 11:05

☐ 12:45

☐ 10:10

☐ 9:40

Show your work

Question	Answer
#1	9:05
#2	choice 2
#3	4:55
#4	choice 2
#5	11:15
#6	12:40
#7	choice 4
#8	3:00
#9	4:00
#10	choice 2
#11	5:10
#12	choice 2