

#1

What time does the clock show? Answer using digits and a colon (for example: 10:46).



Show your work

#2

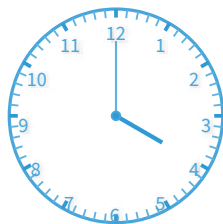
What time does the clock show? Answer using digits and a colon (for example: 10:46).



Show your work

#3

What time does the clock show?



1:00

2:00

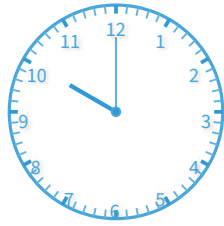
3:00

4:00

Show your work

#4

What time does the clock show?



10:00

8:00

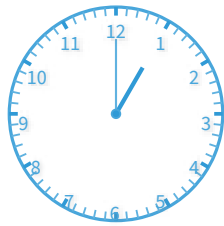
11:00

7:00

Show your work

#5

What time does the clock show?



2:00

1:00

4:00

3:00

Show your work

#6

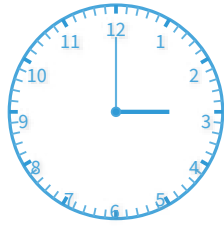
What time does the clock show? Answer using digits and a colon (for example: 10:46).



Show your work

#7

What time does the clock show?



3:00

1:00

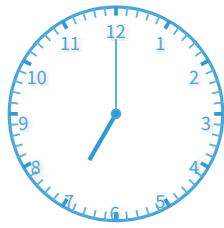
6:00

4:00

Show your work

#8

What time does the clock show?



10:00

9:00

6:00

7:00

Show your work

#9

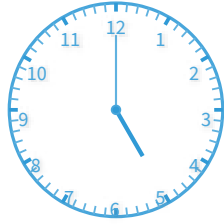
What time does the clock show? Answer using digits and a colon (for example: 10:46).



Show your work

#10

What time does the clock show?



4:00

2:00

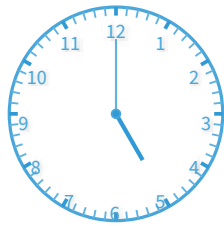
6:00

5:00

Show your work

#11

What time does the clock show?



4:00

2:00

6:00

5:00

Show your work

#12

What time does the clock show? Answer using digits and a colon (for example: 10:46).



Show your work

Question	Answer
#1	3:00
#2	11:00
#3	choice 4
#4	choice 1
#5	choice 2
#6	12:00
#7	choice 1
#8	choice 4
#9	5:00
#10	choice 4
#11	choice 4
#12	9:00