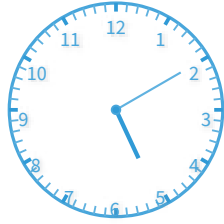


#1

What time does the clock show?



5:10

4:10

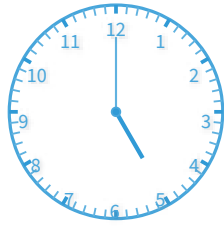
6:35

6:05

Show your work

#2

What time does the clock show?



5:45

5:00

5:15

6:00

Show your work

#3

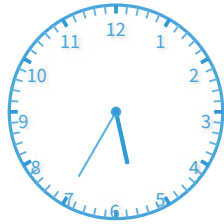
What time does the clock show? Answer using digits and a colon (for example: 10:46).




Show your work

#4

What time does the clock show?



5:55

6:55

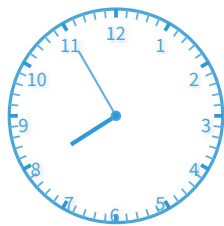
4:00

5:35

Show your work

#5

What time does the clock show?



7:55

10:10

5:40

9:05

Show your work

#6

What time does the clock show? Answer using digits and a colon (for example: 10:46).




Show your work

#7

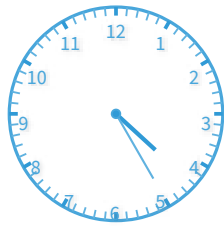
What time does the clock show? Answer using digits and a colon (for example: 10:46).




Show your work

#8

What time does the clock show?



4:40

4:15

4:25

3:30

Show your work

#9

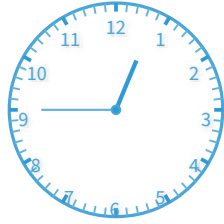
What time does the clock show? Answer using digits and a colon (for example: 10:46).




Show your work

#10

What time does the clock show?

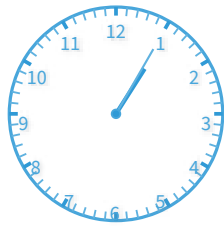


- 11:05                       12:45  
 10:10                       9:40

Show your work

#11

What time does the clock show?



- 1:05                       12:55  
 1:00                       1:25

Show your work

#12

What time does the clock show? Answer using digits and a colon (for example: 10:46).




Show your work

Question	Answer
#1	choice 1
#2	choice 2
#3	12:40
#4	choice 4
#5	choice 1
#6	9:15
#7	3:35
#8	choice 3
#9	5:00
#10	choice 2
#11	choice 1
#12	5:45