

#1

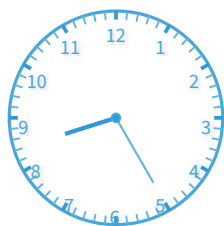
What time does the clock show? Answer using digits and a colon (for example: 10:46).



Show your work

#2

What time does the clock show?



11:00

10:10

7:20

8:25

Show your work

#3

What time does the clock show? Answer using digits and a colon (for example: 10:46).



Show your work

#4

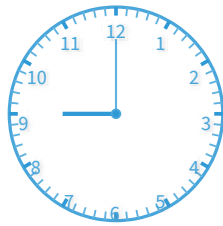
What time does the clock show? Answer using digits and a colon (for example: 10:46).



Show your work

#5

What time does the clock show?



9:55

8:00

6:30

9:00

Show your work

#6

What time does the clock show?



10:15

12:40

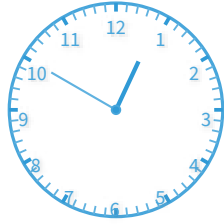
10:35

11:45

Show your work

#7

What time does the clock show?



- 10:45
- 10:20
- 12:50
- 11:10

Show your work

#8

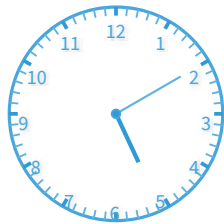
What time does the clock show? Answer using digits and a colon (for example: 10:46).



Show your work

#9

What time does the clock show?

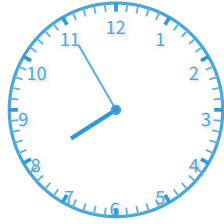


- 5:10
- 4:10
- 6:35
- 6:05

Show your work

#10

What time does the clock show?

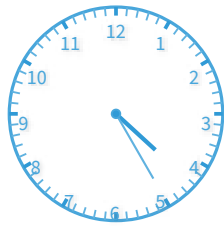


- 7:55 10:10
 5:40 9:05

Show your work

#11

What time does the clock show?

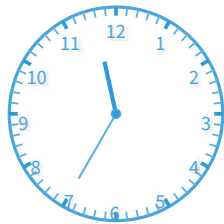


- 4:40 4:15
 4:25 3:30

Show your work

#12

What time does the clock show?



- 11:35 11:30
 10:00 10:05

Show your work

Question	Answer
#1	8:05
#2	choice 4
#3	7:15
#4	5:15
#5	choice 4
#6	choice 2
#7	choice 3
#8	1:45
#9	choice 1
#10	choice 1
#11	choice 3
#12	choice 1