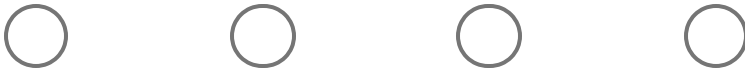
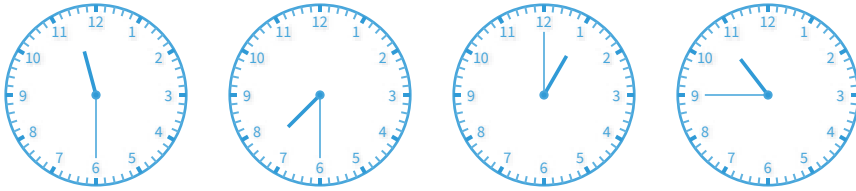


#1

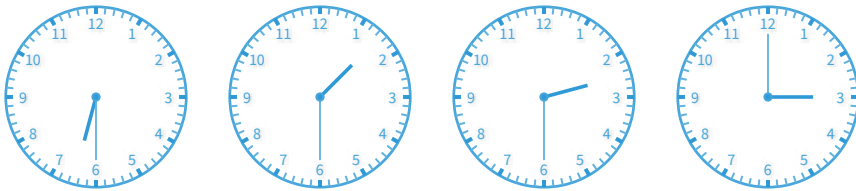
Which of these clocks shows the time 10:45?



Show your work

#2

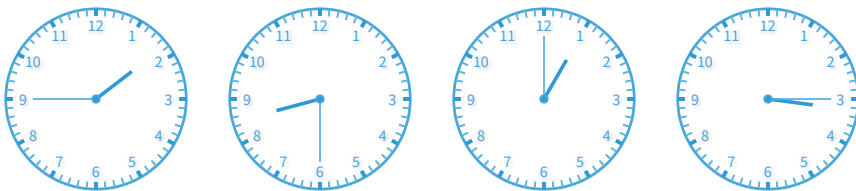
Which of these clocks shows the time 1:30?



Show your work

#3

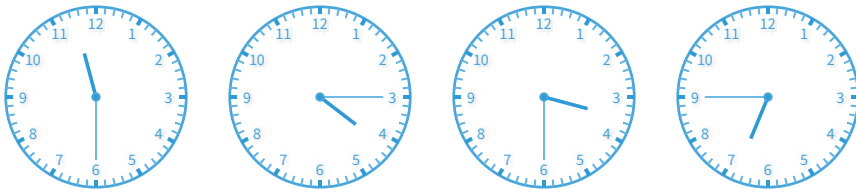
Which of these clocks shows the time 1:45?



Show your work

#4

Which of these clocks shows the time 3:30?



Show your work

#5

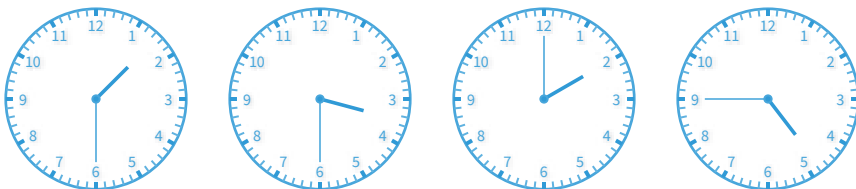
Which of these clocks shows the time 5:15?



Show your work

#6

Which of these clocks shows the time 3:30?



Show your work

#7

Which of these clocks shows the time 8:45?

5:30 8:45 5:15 3:00

Show your work

#8

Which of these clocks shows the time 1:45?

1:45 7:30 7:15 11:00

Show your work

#9

Which of these clocks shows the time 2:15?

4:15 8:30 2:15 10:15

Show your work

#10

Which of these clocks shows the time 3:15?

11:30

3:15

3:30

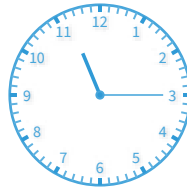
2:30



Show your work

#11

Which of these clocks shows the time 8:45?



Show your work

#12

Which of these clocks shows the time 7:00?



Show your work

Question	Answer
#1	choice 4
#2	choice 2
#3	choice 1
#4	choice 3
#5	choice 4
#6	choice 2
#7	choice 2
#8	choice 1
#9	choice 3
#10	choice 2
#11	choice 1
#12	choice 1