

#1

Zachary purchases a hat that costs \$0.57. Did they receive the proper amount of change (below) if Zachary paid \$0.82?



Yes

No

Show your work

#2

Evan purchases a hat that costs \$0.20. Did they receive the proper amount of change (below) if Evan paid \$0.93?



Yes

No

Show your work

#3

You pay \$0.80 to buy a pickle costing \$0.23. You receive the following change. Is this the correct amount of change?



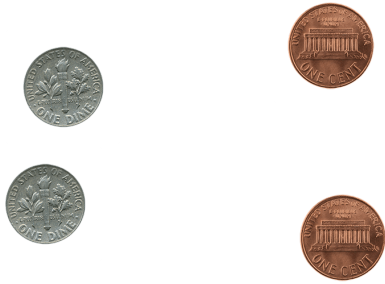
No

Yes

Show your work

#4

You pay \$0.96 to buy a chocolate bar costing \$0.73. You receive the following change. Is this the correct amount of change?



Yes

No

Show your work

#5

You pay \$0.79 to buy an energy drink costing \$0.43. You receive the following change. Is this the correct amount of change?



Yes

No

Show your work

#6

If you pay \$0.98 to buy some candy costing \$0.31 and you receive the following change, is this the correct amount of change?



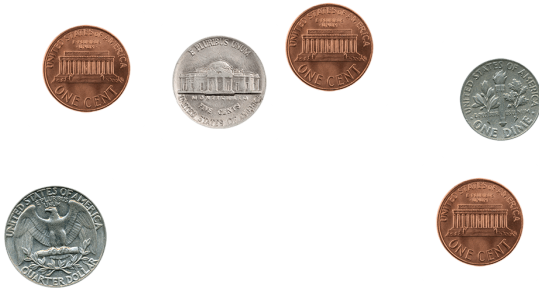
Yes

No

Show your work

#7

If you pay \$0.92 to buy some candy costing \$0.49 and you receive the following change, is this the correct amount of change?



No

Yes

Show your work

#8

Madeline purchases a hat that costs \$0.75. Did they receive the proper amount of change (below) if Madeline paid \$0.87?



Yes

No

Show your work

#9

If you pay \$0.57 to buy some candy costing \$0.27 and you receive the following change, is this the correct amount of change?



No

Yes

Show your work

#10

If you pay \$0.80 to buy some school supplies costing \$0.41 and you receive the following change, is this the correct amount of change?



No Yes

Show your work

#11

Hannah purchases a trinket that costs \$0.69. Did they receive the proper amount of change (below) if Hannah paid \$0.91?



No Yes

Show your work

#12

If you pay \$0.51 to buy some cough drops costing \$0.31 and you receive the following change, is this the correct amount of change?



No Yes

Show your work

Question	Answer
#1	choice 2
#2	choice 1
#3	choice 2
#4	choice 2
#5	choice 1
#6	choice 1
#7	choice 2
#8	choice 1
#9	choice 1
#10	choice 2
#11	choice 2
#12	choice 2