

#1

What time does the clock show? Answer using digits and a colon (for example: 10:46).



Show your work

#2

What time does the clock show?



7:34

8:55

8:29

5:30

Show your work

#3

What time does the clock show? Answer using digits and a colon (for example: 10:46).



Show your work

#4

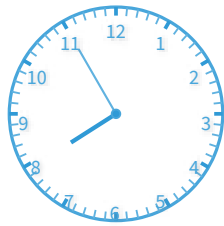
What time does the clock show? Answer using digits and a colon (for example: 10:46).



Show your work

#5

What time does the clock show?



9:56

7:55

9:30

9:51

Show your work

#6

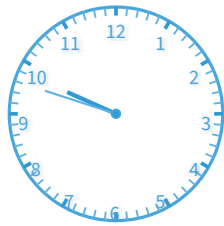
What time does the clock show? Answer using digits and a colon (for example: 10:46).



Show your work

#7

What time does the clock show?



9:48

8:55

9:02

10:17

Show your work

#8

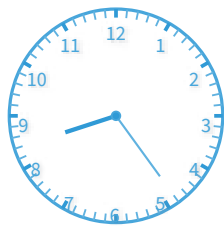
What time does the clock show? Answer using digits and a colon (for example: 10:46).



Show your work

#9

What time does the clock show?



8:35

8:24

6:54

9:29

Show your work

#10

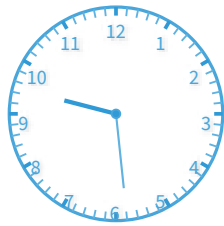
What time does the clock show? Answer using digits and a colon (for example: 10:46).



Show your work

#11

What time does the clock show?



8:29

9:29

8:41

7:18

Show your work

#12

What time does the clock show? Answer using digits and a colon (for example: 10:46).



Show your work

Question	Answer
#1	8:54
#2	choice 1
#3	2:59
#4	4:28
#5	choice 2
#6	7:15
#7	choice 1
#8	8:07
#9	choice 2
#10	7:02
#11	choice 2
#12	7:16