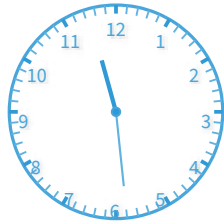


#1

What time does the clock show?



- 9:14 11:08
 9:08 11:29

Show your work

#2

What time does the clock show? Answer using digits and a colon (for example: 10:46).



Show your work

#3

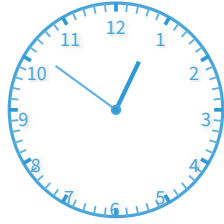
What time does the clock show? Answer using digits and a colon (for example: 10:46).



Show your work

#4

What time does the clock show?



- 12:51
- 11:42
- 9:12
- 11:52

Show your work

#5

What time does the clock show? Answer using digits and a colon (for example: 10:46).



Show your work

#6

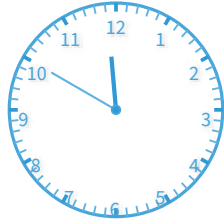
What time does the clock show? Answer using digits and a colon (for example: 10:46).



Show your work

#7

What time does the clock show?

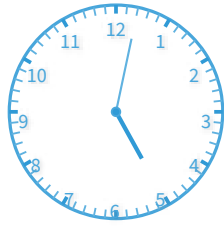


- 11:50 9:09
 10:59 11:57

Show your work

#8

What time does the clock show?



- 6:16 4:36
 5:39 5:02

Show your work

#9

What time does the clock show? Answer using digits and a colon (for example: 10:46).



Show your work

#10

What time does the clock show? Answer using digits and a colon (for example: 10:46).



Show your work

#11

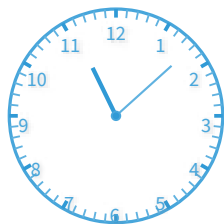
What time does the clock show? Answer using digits and a colon (for example: 10:46).



Show your work

#12

What time does the clock show?



- 7:49
- 11:08
- 11:53
- 7:51

Show your work

Question	Answer
#1	choice 4
#2	5:13
#3	8:54
#4	choice 1
#5	9:03
#6	1:56
#7	choice 1
#8	choice 4
#9	7:43
#10	10:37
#11	8:07
#12	choice 2