

#1 During a seat sale Diana receives a 20% discount off her \$7.46 ticket. How much did she pay for her ticket?

20% off \$7.46

- \$5.97
- \$5.22
- \$7.46
- \$6.71

Show your work

#2 Caleb is buying a super old video game that costs \$5.73. But because it is so old it is on sale for 20%. How much will he pay for the video game?

20% off \$5.73

- \$5.16
- \$4.01
- \$5.73
- \$4.58

Show your work

#3 The sales tax rate is 5%. Lily wants to buy the expansion for a game called Puzzle Stryke that costs \$9.59. How much will the expansion cost with sales tax on top?

Puzzle Stryke Exp \$9.59 plus tax

- \$10.57
- \$10.07
- \$0.50
- \$11.08

Show your work

#4

On Boxing Day Noah finds the coupon below. If he buys a TV that costs \$9.04, but uses his coupon, how much will he pay?



\$

Show your work

#5

Christopher buys his dirt from the same farmer so often that the farmer now gives him a 10% discount. If he is buying \$8.83 of dirt, how much is the discounted price?

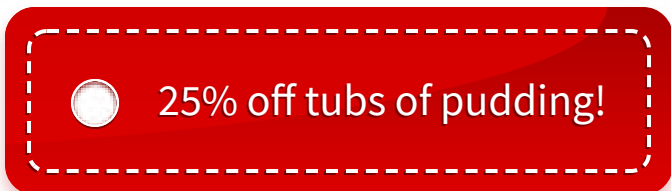


\$

Show your work

#6

Olivia has waited for the sale below to buy a \$8.78 tub of pudding. How much will she pay with the coupon?



- \$6.58
- \$5.71
- \$7.46
- \$8.34

Show your work

#7

The sales tax rate is 15%. If Lily wants to purchase a wagon that costs \$5.34, how much does she actually need with sales tax?

Wagon \$5.34 plus tax

\$

Show your work

#8

Samantha is buying a package of bacon for \$5.42. If she has the coupon below, how much will she pay for the bacon?

15% off Bacon!

\$5.69

\$5.15

\$4.06

\$4.61

Show your work

#9

Football is \$8.67. Which coupon

Save \$2.17 on any item!

30% off any purchase

Show your work

#10 The sales tax rate is 35%. Elizabeth wants to buy the expansion for a game called Puzzle Stryke that costs \$5.44. How much will the expansion cost with sales tax on top?

Puzzle Stryke Exp \$5.44 plus tax

\$

Show your work

#11 The sales tax rate is 30%. What is the total cost of a grocery trip that came to \$8.74?

Groceries \$8.74 plus tax

- \$11.36
- \$12.50
- \$11.93
- \$0.57

Show your work

#12 A store is giving out the coupons below for furniture. Angela decides to use this opportunity to buy a new reading chair. If the chair costs \$9.48 and she uses the coupon, how much will she pay?

30% off all furniture!

\$

Show your work

Question	Answer
#1	choice 1
#2	choice 4
#3	choice 2
#4	5.88
#5	7.95
#6	choice 1
#7	6.14
#8	choice 4
#9	choice 2
#10	7.34
#11	choice 1
#12	6.64