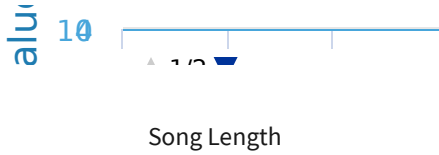


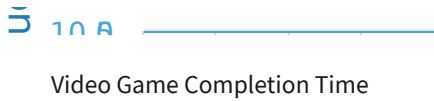
#1 Sydney made the graph below to visualize the length of her favorite songs. Use the data in the line graph to complete the frequency chart below.



Length (minutes)	Frequency
40-59	7
60-79	5
80-99	<input type="text"/>

Show your work

#2 The graph below shows how many games Mia completed at different times. Use the graph provided to complete the frequency chart below.



Length (hours)	Games
20-39	3
40-59	5
60-79	2
80-99	<input type="text"/>

Show your work

#3 Luke makes the following graph on how many children are in all of his friends families. Use the data collected to complete the frequency chart below.

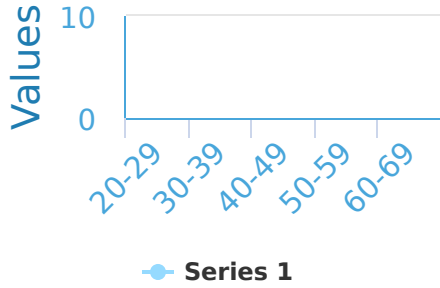
4 9 2 5 3 5 5 3 7 6 11 5 8 6 8 6 11 6 11 3



- 3
- 4
- 1
- 6

Show your work

#4 The data below is the grades from a quiz written by Joshua's class. Use the data in the line graph to complete the frequency chart below.



- 0
- 1
- 2
- 3

Show your work

#5 The data below shows how many games Alexander completed at different times. Use the data provided to complete the frequency chart below.

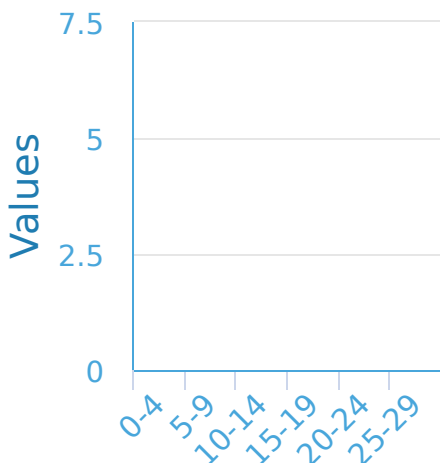
10 14 19 7 9 23 11 12 13 22 23 21 11 16 5

Length (hours)	Games
0-4	0
5-9	0
10-14	0
15-19	0
20-24	0
25-29	0

- 4
- 6
- 7
- 8

Show your work

#6 The graph below shows how many different mates a group of female antelope have had. Use the graph provided to complete the frequency chart below.



Show your work



#7

The data below is the grades from a quiz written by Gavin's class. Use the graph provided to complete the frequency chart below.

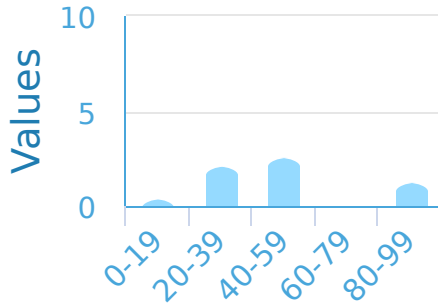
Quiz Marks

Students	Mark
30-39	3
40-49	6
50-59	5
60-69	<input type="text"/>
70-79	1

Show your work

#8

The data below is the grades from a quiz written by Ella's class. Use the graph provided to complete the frequency chart below.

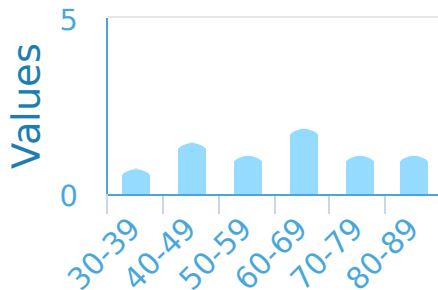


- 1
- 5
- 0
- 3

Show your work

#9

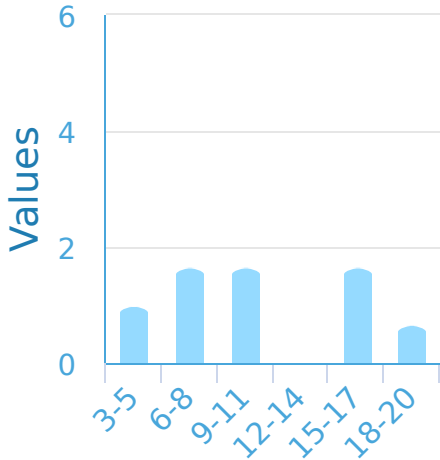
The graph below shows how many games Makayla completed at different times. Use the graph provided to complete the frequency chart below.



- 0
- 1
- 5
- 3

Show your work

#10 The graph below shows how many different mates a group of female antelope have had. Use the data provided to complete the frequency chart below.



Show your work

#11 The graph below shows how many different mates a group of female antelope have had. Use the data provided to complete the frequency chart below.

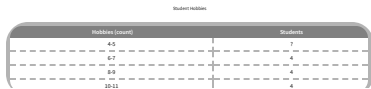
Female Antelope Mates

Mates (count)	Frequency
0-4	5
5-9	5
10-14	4
15-19	0
20-24	<input type="text"/>

Show your work

#12 The graph below shows how many different hobbies each student in Kayla's class has. Use the data provided to complete the frequency chart below.

6 8 5 5 10 8 10 8 5 9 7 7 10 11 7



- 1
- 3
- 5
- 6

Show your work

Question	Answer
#1	3
#2	5
#3	3
#4	1
#5	6
#6	3
#7	0
#8	3
#9	3
#10	0
#11	1
#12	3